

CENTRAL TARP



Central Tarp has pioneered the design and evolution of the chip trailer Rollover Tarp. Here are just some of the features that have made our tarps so long-lasting!

- **Premium Quality Vinyl:** We use North American made Shelter-Rite vinyl in our tarps. Shelter-Rite's patented technology has proven itself to far outlast competing vinyl tarps.
- **R.F. Welded Seams:** 10 times stronger than sewn seams and no thread to rot. Where sewing is required, Central uses high quality, U.V. resistant tarp thread!
- **Heavy-Duty Load Strap with EDGEGUARD™:** We use top grade, high tenacity, load strap webbing for all tiedowns. Much stronger and longer lasting than seatbelt web, higher wear abrasion with EDGEGUARD™ to protect edges from wear and abrasion.
- **Wear pad reinforcements:** Double layering of common wear areas adds years to the life of your tarp.
- **Anti-Abrasion Strap Covers:** All tiedown straps are protected by an additional layer of vinyl to protect against cuts and wear from wood chip abrasion!
- **Anti-Abrasion Tarp Thread:** The thread that we use is custom designed for Central Tarp to withstand the high abrasion that roll tarps are subjected to. It not only is more durable and stronger than standard tarp thread, but it also lays flatter, reducing the damaging effects of top-rail abrasion.
- **Hot Forged, Anti-Wear Double Bar "D" Rings:** All tie-down rings have an extra bar to prevent the "D" ring from turning on the webbing. Hot Forged to give a 9000lb break strength. This hardware has also passed the highest level of salt spray corrosion testing.
- **Experience:** Central has been building tarps for chip trucks for over 30 years. We have worked hard to develop the #1 lasting and performing rolltarp in the industry!

Tarps built to last is not a slogan, but a promise.

- **Facilities and Equipment:** Central has over 6,000 sq. ft. dedicated to the manufacturing of quality chip tarps and nets. We also have detailed plans for almost every trailer on the road. We can build a tarp to your exact specifications or any special needs you may have!



Check Out Our Web Site at:

www.centraltarp.com

To Order, Call Toll-Free

From anywhere in North America

1-888-549-5251

Chip Tarp & Trailer Supplies

EZ-OFF Bracket Components:



PART # 001

Complete Bracket Assembly: *Made of malleable powder coated steel. The bracket has a pivoting tarp stop that swings down if it is hit on a loading bin, protecting the bracket and trailer from damage.*



PART # 002

Bracket Body: *Bolts to the trailer.*



PART # 003

Bracket Insert: *Held in place to bracket body by two nickel plated clevis pins. Removing top clevis pin allow tarp to be released from bracket and quickly removed.*

To Order, Call Toll-Free

From anywhere in North America

1-888-549-5251

EZ-OFF Bracket Components:



PART # 004

Tarp Stop: *Pivoting tarp stop that swings down if it is hit on a loading bin, protecting the bracket and trailer from damage.*



PART # 005

Clevis Pin: *Nickel plated for corrosion protection. Used to lock tarp bracket insert to tarp bracket body. Is used in conjunction with part #006 (retainer pins)*



PART # 006

Retainer pins: *Used in conjunction with clevis pins #005. Quickly clips into Clevis pins to lock tarp bracket insert to bracket body.*

To Order, Call Toll-Free

From anywhere in North America

1-888-549-5251

EZ-OFF Bracket Components:



PART # 011

Flexible Complete Bracket Assembly: *Made from a flexible material they will bend if hit by a loading bin etc. This flexing ability helps protect both the bracket and trailer from damage. **Only sold as a completely assembled part.***



PART # 012

Flexible Complete Bracket Assembly with 6" offset: *This is the same as bracket # 011 shown above, only it has a 6" offset from the trailer to help move the rolled tarp out of the way for rolling. **Only sold as a completely assembled part.***

Tarp Attachment Hardware:

PART # 944

Arctic Rubber Bungee Tie-down: *Used in conjunction with cable #946. U.V. protected Arctic Rubber provides a constant tension to the tarp, keeping it secure even as the load settles. Proven performance in Canadian winters.*



PART # 945

Blue "Cold Weather" bungees:
36" in length, from tip to tip. Great for securing the front or rear flaps on a roll tarp. Premium rubber compound ensures a long life and proven performance.



PART # 946

Cables for bungees: *Used in conjunction with the Arctic bungee #944. 1/4" aircraft cable x 36" in length. Loops on both ends to attach the bungees to the tarp D-ring tie-down.*



To Order, Call Toll-Free
From anywhere in North America
1-888-549-5251



PART # 947

Tarp Pipe Clamps: Used to secure the pipe that is in the pocket to the tarp. This clamp keeps the pipe from spinning around inside the pocket when the tarp is cranked open and closed.



PART # 948

J - Hooks: J-Hooks are mounted on the lower side of the trailer. The Artic bungees (Part #944) are pulled down and secured to these J-Hooks.



PART # 949

Load Binders: Load binders are used on the front and back of the tarp. They are a reliable way to secure the tarp and help keep wind from billowing the tarp. As the load settles, re-adjust to protect the tarp from wind whip damage.

PART # 950

Binder cable and chain assembly: Consists of a 69" cable and 12" inches of chain. This assembly is used to attach the load binder to the tarp D-ring tie-down.



To Order, Call Toll-Free
From anywhere in North America
1-888-549-5251

Tarp Repairing Supplies:



Tarp Repair Glue & Cleaner

PART # 661 – Glue – 237ml (8oz)

PART # 662 – Glue – 946ml (Quart)

PART # 663 – Glue – 3.78ml (Gallon)

PART # 664 – Cleaner – 3.78ml (Gallon)



PART # 200

Shelter-Rite™ Premium Vinyl: *This is the same quality vinyl that is used in all the tarps Central builds. It comes 60" wide off of the roll and is sold by the running foot. Use for patching along with our HH-66 vinyl glue, shown above.*



PART # 300

Split Rings: *1½" in diameter. Typically these are used to attach chip nets to the trailer. These rings are a Heavy Duty version, designed to not open up or stretch out of shape when pulled.*

To Order, Call Toll-Free
From anywhere in North America
1-888-549-5251

Miscellaneous:



PART # 301

7/16 Rubber Rope: Sold in 150' rolls, (Best Value) or can be purchased by the running foot.



PART # 303

2" D-Ring: These D-rings are a heavy duty, Hot Forged Tie-down ring. They have a very high break strength and feature a double bar to keep the ring from turning on the webbing and cutting it.



PART # 304

Bull-Ring: These Bull Rings are used on tarps requiring a Bull-Ring front flap. Nickel Plated for corrosion protection.



PART # 305

Grommet Die set: Used to repair your tarps in your shop. Die sets typically consist of a cutter to cut a hole for the grommet and then the male and female grommet compression set to fasten the grommet to the material.

To Order, Call Toll-Free

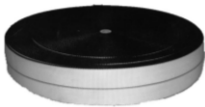
From anywhere in North America

1-888-549-5251



PART # 355

Grommets: *Grommets are available in a #4 size (Used in chip-nets) and a #6 size (Used on TYCROP Smooth-Flow Tarps). All grommets are a double locking, solid brass style for extra durability and pull-out strength.*



PART # 306 – 307 - 308

2" Load Strap: *Part # 306 - Black in Color*

3" Load Strap: *Part # 307 - Black in Color*

4" Load Strap: *Part # 308 - Black in Color*

This load strap is built to our specs for extra durability.

To Order, Call Toll-Free

From anywhere in North America

1-888-549-5251

We have over a thousand detailed tarp plans and build for all the major trailer manufacturers.



Columbia - Remtec

Alloy

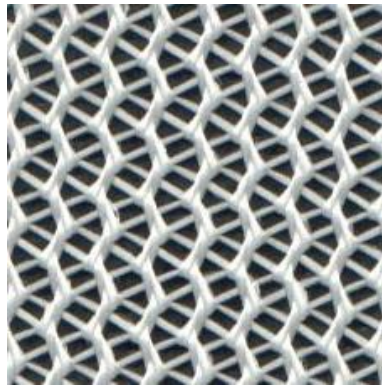
Anser

To Order, Call Toll-Free
From anywhere in North America
1-888-549-5251



*Central Tarp has a tarp plan room with hundreds of tarp plans for nearly every trailer on the market. If we don't have a plan to match your specific trailer, it is very easy for us to build a new plan for your tarp over the phone. By utilizing our existing data base and you supplying us with tie-down spacing, etc, we can custom manufacture to your specifications. **We are your Roll Tarp specialists!***

Chip Nets



Sample of Chip Net Material

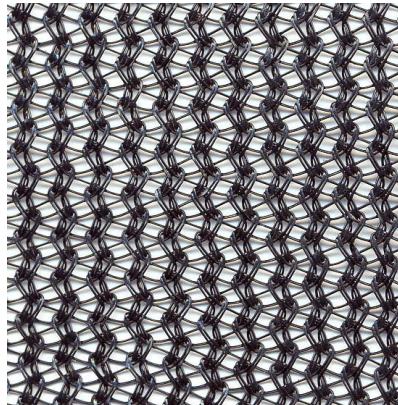
100% Polyester Chip Net Mesh (Mill Friendly)

- Teflon-Coated for Water Repellency, (*Exclusive to Central Tarp*)
- Acrylic Treated for Strength and Durability
- Premium Weave, Preferred by Industry.
- Unlike inferior chip net mesh, ours will not stretch or shrink.
- Many options are available to make your net easier to deploy and retract.



Heavy-Duty Split Rings: Metal is tempered to keep rings from opening up and coming apart. Used to attach nets to cable runners on trailers. (Part # 300).

Waste Hauling Nets



Sample of Black Polypropylene Net Material

100% Polypropylene Net Mesh

- Up to 12' wide mesh material
- Good cost effective mesh for use in waste hauling or Bin Tarping etc.
- High Resistance to U.V. damage
- Typically reinforced in the hems with seatbelt webbing for extra grommet pullout strength and durability.

To Order, Call Toll-Free
From anywhere in North America
1-888-549-5251